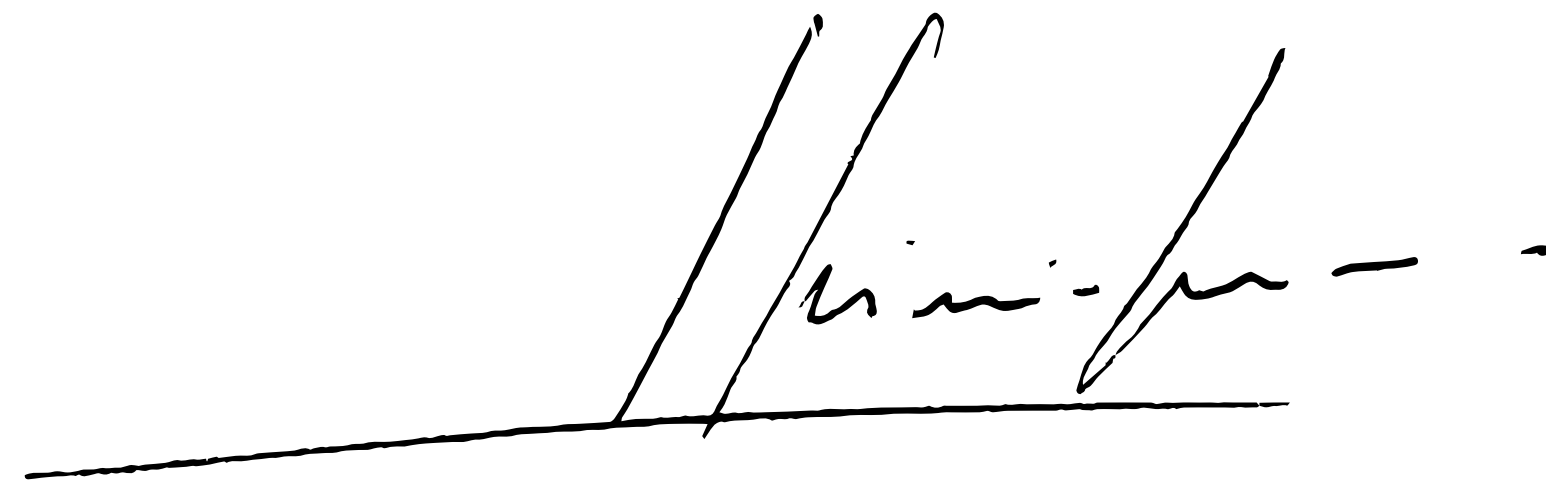




pininfarina
CLASSICHE

**“It’s essential to preserve our heritage
by making it part of our future,,**

Sergio Pininfarina

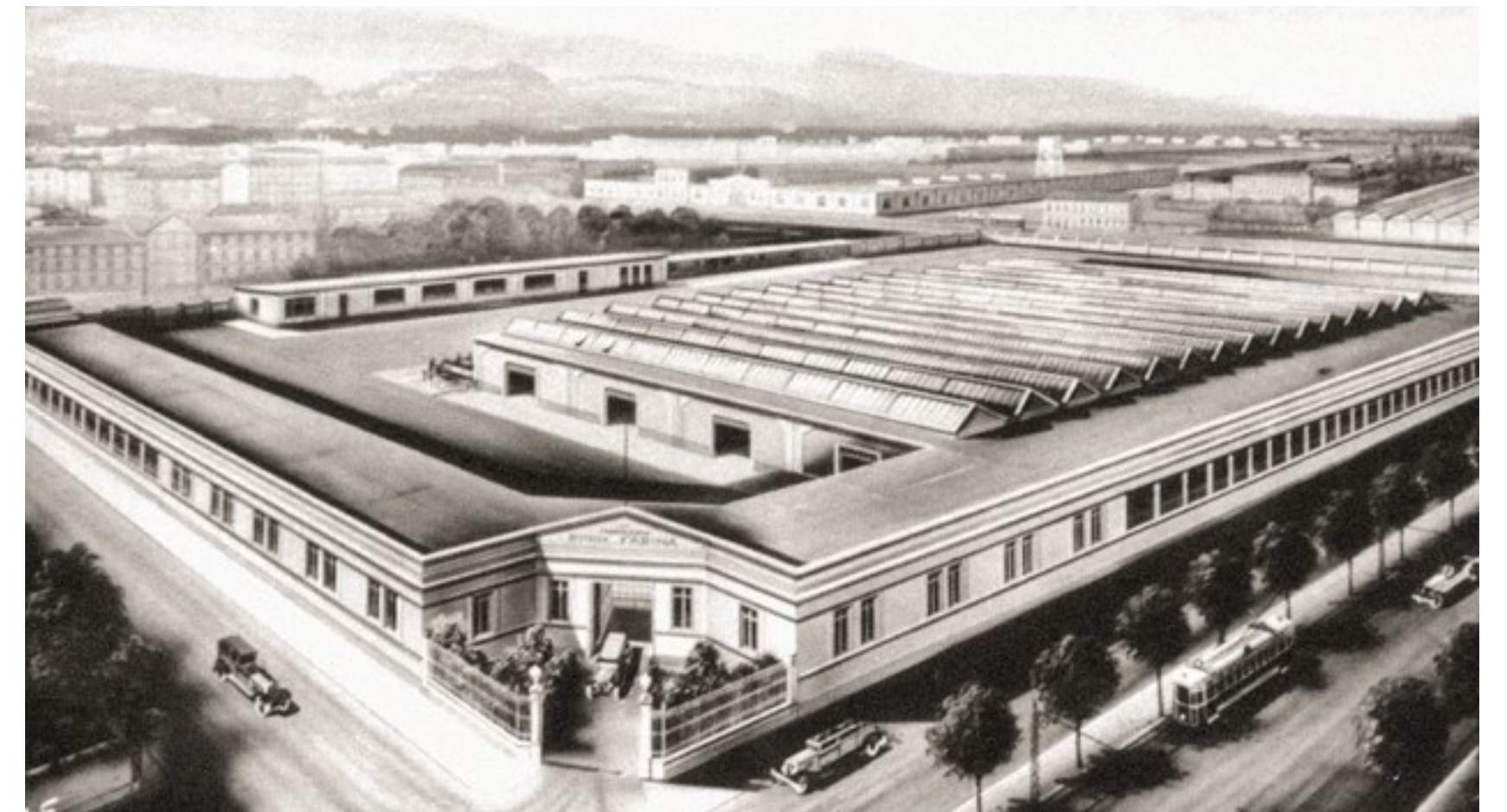
A handwritten signature in black ink, appearing to read 'Pininfarina', written over a horizontal line.

HOW THE STORY BEGAN

Legendary

It started with a dream born in Italy more than nine decades ago by a visionary man Battista Farina, with the desire to create beauty. The story of a singular obsession, an enduring passion, a family tradition, this is the story of Pininfarina where tradition inspires innovation and a visionary style shapes the future.

Since its foundation year in 1930, Pininfarina has designed some of the most iconic cars with their elegant design that has made the history of automotive.



**PININ FARINA / S. A.
TORINO**

*Carrozzerie
di Lusso e di Gran Lusso*

Le nostre Carrozzerie sono munite di col-
pelli di sicurezza "VIS" e "SECURITY"

GUIDA INTERNA SEMI-AERODINAMICA SU FIAT "1500"

CORSO TRAPANI 107 / TELEFONI 32.356 / 32.745

AN ICON OF BEAUTY

timeless

Pininfarina embodies the values of purity, elegance and innovation. With its timeless design, it has shaped some of the most iconic cars. The Cisitalia, the Lancia Aurelia B24, the most iconic Ferraris represent the history of Pininfarina and made the brand Pininfarina famous across the world, embodying the Italian Style.



THE PININFARINA HERITAGE

priceless

Pininfarina values its past and heritage, which have contributed to the history of the automotive sector.

Our archive, together with the Pininfarina collection, represents Pininfarina's rich historical legacy, offering access to unique materials. The classification of the archive gave birth to Pininfarina Classiche, which aims to certify some of the most iconic cars designed and manufactured by Pininfarina.





pininfarina
CLASSICHE

TIMELESS BEAUTY, NOW CERTIFIED

Pininfarina Classiche is a certification program dedicated to classic cars that were crafted in our facilities for various brands throughout the years.



PININFARINA CLASSICHE FOR CLASSIC CARS AND YOUNGTIMERS

The Pininfarina Classiche certification encompasses **classic cars and youngtimers designed and produced by Pininfarina.**

Legendary models from Fiat, Lancia, Peugeot, Alfa Romeo and few more Pininfarina cars are certified through the program.



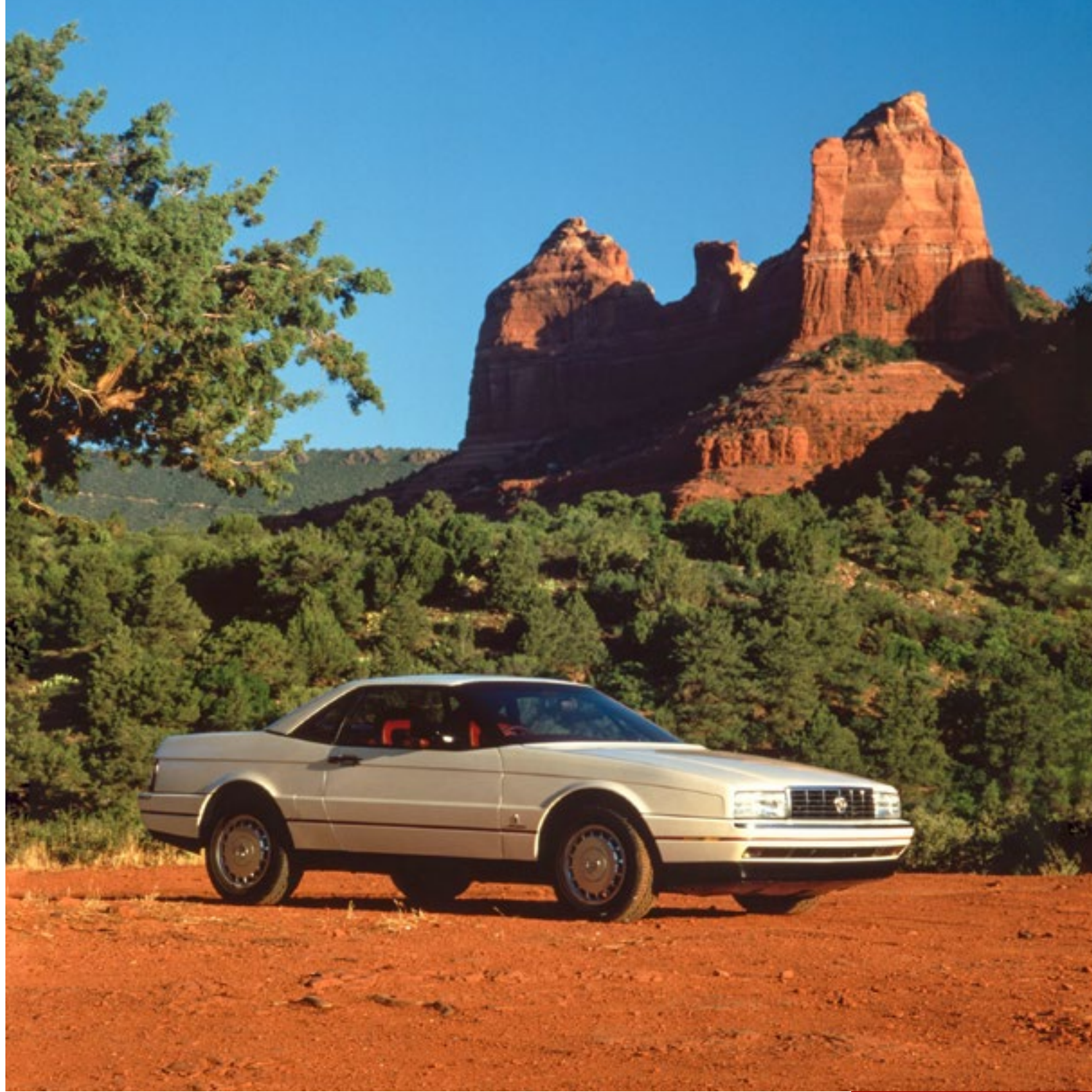
DESCRIPTION OF THE PROGRAM

Our new service stems from the initiative to make the Pininfarina historical archive available to car owners and collectors.

The Pininfarina Classiche certification is a declaration related to the following production specifications:

- **chassis number**
- **market of destination**
- **model and type code**
- **exterior color**
- **interior finishing**
- **car mats**
- **date of exit from Pininfarina facilities**
- **other available information**
(engine number, body number, soft top, etc.)





PHOTOS FROM PININFARINA ARCHIVE





PHOTOS FROM PININFARINA ARCHIVE



HOW TO REQUEST THE DECLARATION

1. Send an e-mail to classiche@pininfarina.it with the following information about the vehicle: model, chassis number and registration date (if known). If possible attach a photocopy of the car's registration documents.
2. Receive confirmation of the presence of the data for the issuance of the declaration in the Pininfarina historical archive (approximately within 2 working days).
3. After data confirmation, Pininfarina will send a form to be filled out by the Customer. The form will also contain the necessary information for payment via bank transfer.
4. Pininfarina will send the digital scan of the declaration via email and send the original by courier within 5 working days after receiving the payment.



PININFARINA CLASSICHE DECLARATION PRICE LIST

VALID FROM APRIL 1st TO DECEMBER 31st, 2024; ALL PRICES INCLUDING VAT

	vehicles produced after 1980	vehicles produced before 1980
<ul style="list-style-type: none"> • Alfa Romeo Spider (Duetto) • Fiat 124 Spider • Pininfarina Spider Europa and Volumex 	\$500,00	\$650,00
	vehicles produced after 1975	vehicles produced before 1975
<ul style="list-style-type: none"> • Peugeot • Fiat, all other models • Lancia • Cadillac Allanté 	\$650,00	\$800,00
Other brands and models, if available in Pininfarina Archive	Quotation on request	

The listed prices are applicable exclusively to the mentioned carmakers / models. Any inquiries regarding other brands will be assessed on an individual basis.

For all shipments the price list will be supplemented with courier shipping fees*. The following cost ranges are provided as an indication:

North America: €16 - 18

South America: €20 - 22

Europe: €16 -18

Australia: €21 - 23

Asia: €20 - 22

Other geographical areas: evaluated case by case

*the shipping cost in euros will be converted to US dollars based on the exchange rate on the day the invoice is issued; the exact amount will be calculated prior to the shipment and included in the total price to be paid



pininfarina
CLASSICHE



PININFARINA CLASSICHE FOR FERRARI

Pininfarina Classiche Certification program is also available for Ferrari classic cars strictly in relation to the components designed and produced by Pininfarina.

The Pininfarina Classiche declaration for Ferrari is related to the following production specifications:

- **bodywork number**
- **configuration type**
- **type code**
- **exterior color**
- **interior finishing**
- **car mats**
- **date of exit from Pininfarina facilities**
- **other available information**
(es. soft top, power windows etc.)

Each request for a Pininfarina Classiche declaration for Ferrari cars is treated individually, which may result in a longer processing time.



WE MOVE DREAMS

DICHIARAZIONE DI
SPECIFICHE DI PRODUZIONE

DECLARATION OF
PRODUCTION SPECIFICATIONS

Pininfarina dichiara che dai registri di produzione conservati presso Archivio Storico Pininfarina, il veicolo **Ferrari Testarossa** risulta prodotto da Pininfarina sul telaio Ne fornito da Ferrari nel in relazione esclusivamente ai componenti elencati di seguito unitamente alle rispettive caratteristiche:

*Pininfarina declares that from the production records kept in the Pininfarina Historical Archive, the vehicle **Ferrari Testarossa** has been produced by Pininfarina on the chassis Ne supplied by Ferrari in in relation exclusively to the components listed below together with their respective characteristics:*

Ne SCOCCA / BODYWORK	002516
CODICE TIPO / TYPE CODE	267
TIPO DI ALLESTIMENTO / CONFIGURATION TYPE	Versione standard / standard version
COLORE ESTERNO / EXTERIOR COLOUR	Rosso Ferrari
FINIZIONE INTERNI / INTERIOR FINISHING	Nero
TAPPETI / CAR MATS	Nero
DATA DI USCITA DAGLI STABILIMENTI / DATE OF EXIT FROM PININFARINA FACILITIES	24.02.1988
NOTE / NOTES	-

La presente dichiarazione di specifiche di produzione riguarda esclusivamente i componenti progettati e realizzati da Pininfarina ed esclude tutti i componenti realizzati da Ferrari S.p.A., come il telaio, il motore, il cambio, ecc.
This declaration of production specifications covers only components designed and manufactured by Pininfarina, and excludes all parts made by Ferrari S.p.A., such as the chassis, engine, gearbox, etc.

08.04.2024, Cambiano (TO), Italia Procuratore / Legal Representative

PININFARINA CLASSICHE FOR FERRARI

PRICE LIST VALID FROM APRIL 1st TO DECEMBER 31st, 2024;

ALL PRICES INCLUDING VAT

• Ferrari 250 GT	\$9.000,00		
	vehicles produced up to 1965	vehicles produced from 1966-1975	vehicles produced after 1975
• All other Ferrari models, if available in Pininfarina Archive	\$6.500,00	\$5.500,00	\$4.500,00

The listed prices are applicable exclusively to the mentioned carmakers / models. Any inquiries regarding other brands will be assessed on an individual basis.

For all shipments the price list will be supplemented with courier shipping fees*. The following cost ranges are provided as an indication:

North America: €16 - 18

South America: €20 - 22

Europe: €16 -18

Australia: €21 - 23

Asia: €20 - 22

Other geographical areas: evaluated case by case

**the shipping cost in euros will be converted to US dollars based on the exchange rate on the day the invoice is issued; the exact amount will be calculated prior to the shipment and included in the total price to be paid*

If you wish to enrich the historical documentation
of your Pininfarina car, please contact us to learn more.

CLASSICHE@PININFARINA.IT

Discover also

EXCLUSIVE ARTWORKS BY PININFARINA

An additional service for those who turn to Pininfarina Classiche
to request a certification



EXCLUSIVE ARTWORKS BY PININFARINA

Would you like to have a print of a design sketch of your car from the Pininfarina archive?

Would you like a hand-made reproduction of your car by a Pininfarina designer, either as an original or as an artistic print?

Send a photo of your car and tell us what type of artwork you would like to receive to the same address where you request certifications:

classiche@pininfarina.it.



EXCLUSIVE ARTWORKS BY PININFARINA **PRICE LIST**

VALID FROM APRIL 1st TO DECEMBER 31st, 2024; ALL PRICES INCLUDING VAT

PININFARINA ARCHIVE PRINTED REPRODUCTION			CUSTOM HAND-DRAWN ILLUSTRATION BY A CURRENT PININFARINA DESIGNER		
Original hand-drawn sketch, if available in Pininfarina Archive	Small (A3)	\$650,00	Printed version, numbered and hand-signed (unlimited)	Small (A3)	\$1200,00
	Medium (A2)	\$750,00		Medium (A2)	\$1500,00
	Large (A1)	\$900,00		Large (A1)	\$2000,00
			Original hand-drawn illustration	upon request \$3.500 - 6.500	

Discover more about Pininfarina Classiche

WWW.PININFARINA.IT/CLASSICHE